

Safe Area Wash System

DATA SHEET

Description

The gas turbine compressor wash system is designed to clean gas turbine compressor blades in non-hazardous areas by using a high-pressure hot water jet, with a maximum pressure of 150 bar.

The unit is free standing and has a three phase 50 Hz or 60 Hz, 380 through 690 VAC, 4 kW motor driving high-pressure water pump.

There is also a water tank within the unit with an integrated 6 kW temperature controlled heating element. Wash System components are suitable for Safe Area only.



Features

Static or wheeled portable versions

Non-hazardous or Safe Area application

Hot, high-pressure system

Stainless or mild steel cabinet versions

All wetted parts in passivated stainless steel

Self-contained

Applications

- Gas turbines

Technical data

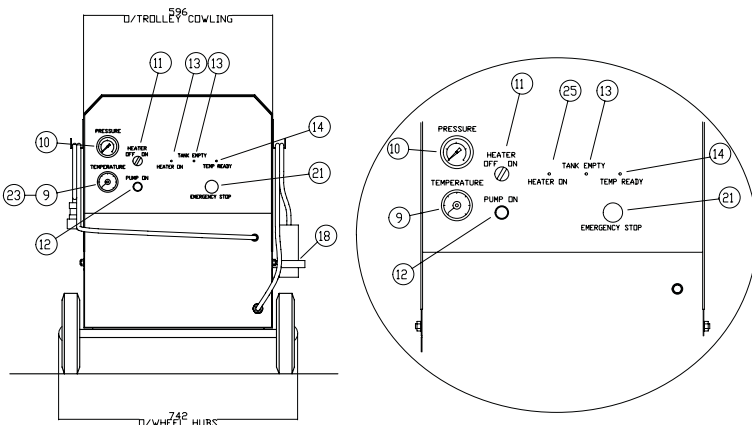
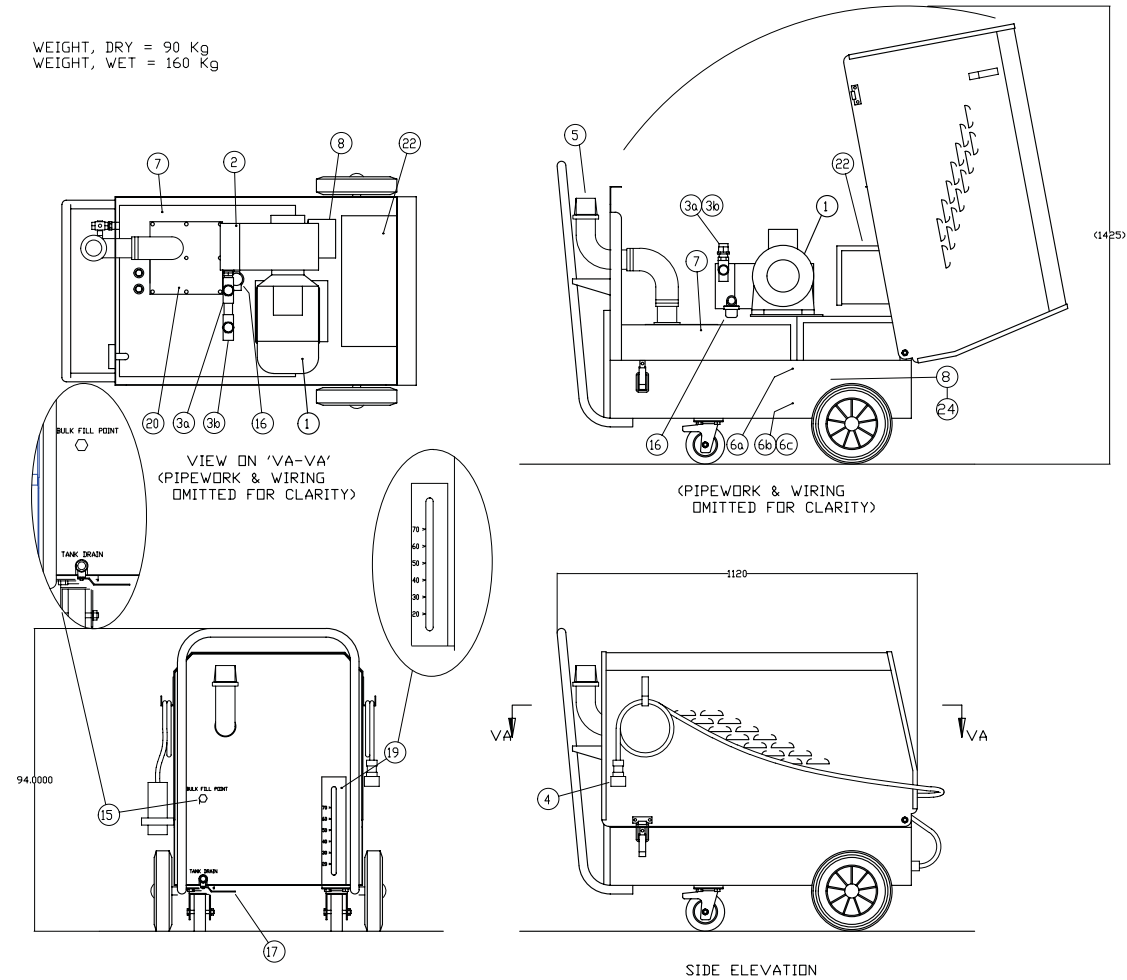
Electrical information

Max. power consumption	6 kW
Voltage	380 through 690 VAC, 3 phase
Frequency	50/60 Hz
Motor power	4 kW/5.5 Hp
Heating element	6 kW
Water requirements	60 °C
Max. inlet temperature	
Min. inlet pressure	2 bar
Performance data maximum working pressure	150 bar
Maximum water flow rate	15 l/min
Maximum output temperature	70 °C
Sound pressure	85 dB (A)
All electric components	IP65 or above

Dimensions

Typical Wash System General Arrangement Drawing (please see note*)

WEIGHT, DRY = 90 Kg
WEIGHT, WET = 160 Kg



KEY COMPONENT LEGEND				
KEY No.	DESCRIPTION	SIZE		TAG No.
1.	MOTOR			XM15
2.	PUMP	23D.020	MULTI-PISTON	XP6
3a.	PRESSURE CONTROL VALVE	1/2" NPT	40A002	PCV34
3b.	SAFETY VALVE	1/2" NPT	40A002	PSV57
4.	WASH FLUID OUTLET (HANSEN Q.R.)	1/2" HK SERIES	SOCKET & DUSTCAP	FNC
5.	TANK FILLER WITH FILTER	76mm	FILTER-AB.68918	XF85
6a.	TANK 'LOW LEVEL SWITCH'		FLDAT SWITCH-RSF40	LS78A
6b.	TANK 'LOW LEVEL SWITCH'		FLDAT SWITCH-RSF40	LS78B
6c.	TANK 'LOW LEVEL SWITCH'		FLDAT SWITCH-RSF40	LS78D
7.	TANK (S.S.)	925x545x283		
8.	HEATING ELEMENT		RESISTIVE ELEMENT	IH7A
9.	TEMPERATURE GAUGE			TI23
10.	PRESSURE GAUGE	9C.001; G1/4"	LIQUID FILLED	PI56
11.	HEATER SWITCH (ON/OFF)		2 POS'N SWITCH	HS77
12.	PUMP SWITCH (ON/OFF)		MOMENTARY PUSHBUTTON	HS98
13.	TANK EMPTY INDICATOR		RED LED INDICATOR	XL56
14.	TEMPERATURE READY INDICATOR		GREEN LED INDICATOR	XL55
15.	TAP FILL POINT	3/8" BSP FEMALE		JVC
16.	FILTER ELEMENT	78.002 - 50 MICRON	INLINE FILTER	XF109
17.	DRAIN VALVE	3/8" NPT FEMALE		HV117
18.	ELECTRIC CONNECTION PLUG			
19.	TANK LEVEL GAUGE	1/2"	CLEAR TUBE	LG7
20.	TANK INSPECTION COVER	1/2"		
21.	EMERGENCY STOP BUTTON		MUSHROOM HD P/BUTTON	HS97
22.	CONTROLS ENCLOSURE			
23.	TEMP. SWITCH (CONTROL)			TS78
24.	TEMP. SWITCH (CUT-OUT)	(PART OF HEATER)	BI-METALLIC STRIP	TS80
25.	HEATER ON INDICATOR		RED LED INDICATOR	

* Note. Please ask manufacturer for the exact drawing against your order. Wash systems may vary in control and layout arrangements depending on the application.

