

# TYPE 2800-1G

## DATA SHEET

### Description

Work output 30 ft lbf (40.5 Nm)

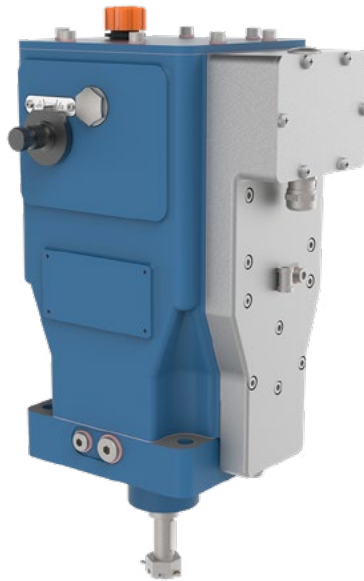
The REGULATEURS EUROPA 2800 is a proportional, fuel control actuator in which the output shaft position is proportional to the electrical input signal current.

The design incorporates over seventy years of experience in building hydraulic governors and actuators and provides a compact solution that is interchangeable with other proprietary units.

With its internal oil pump and self contained oil supply the 2800 provides the same high levels of reliability that have been proven on the existing 2200 range.

Starting boosters can be supplied for applications where rapid starting or minimising air consumption is an issue.

The extensive HEINZMANN and REGULATEURS EUROPA worldwide network of branches, representatives and authorised dealers ensures fast responsive and professional service wherever our customers are.



### Features

True proportional actuator.  
No position feedback required

Compact size envelope

For use with the  
REGULATEURS EUROPA  
Viking range of digital  
electronic governors

Interface module allows  
for use with other  
manufacturer's governors

Low maintenance / high  
reliability

Self-contained oil supply

Range of drive shaft options

### Application range

- Most suited to diesel engines in industrial and power generating applications.
- A high work output actuator in a compact body size.
- Designed to work with REGULATEURS EUROPA Viking electronic governor or other proprietary electronic governor controls.

## Technical data

Actuator input signal	0 ... 1 Amp nominal operating range 250 ... 750 mA (2 to 8)  Optional: 0 ... 200 mA 20 ... 160 mA (2 to 8)
Open loop positional accuracy	±1.5 % FSD approx.
Work output nominal	30 ft lbf (40.5 Nm)
Torque (increase fuel)	49.5 lb ft (67 Nm)
Torque (decrease fuel)	38.5 lb ft (52 Nm)
Output shaft angular movement	46.7° max. 28° from 2 to 8 (no load to full load)
Output shaft	5/8 inch 36 SAE serrations  Optional: 3/4 inch 48 SAE serrations
Drive speed	300 ... 2000 rpm
Direction of rotation	either
Weight	152 lb (24 kg)

## Dimensions

