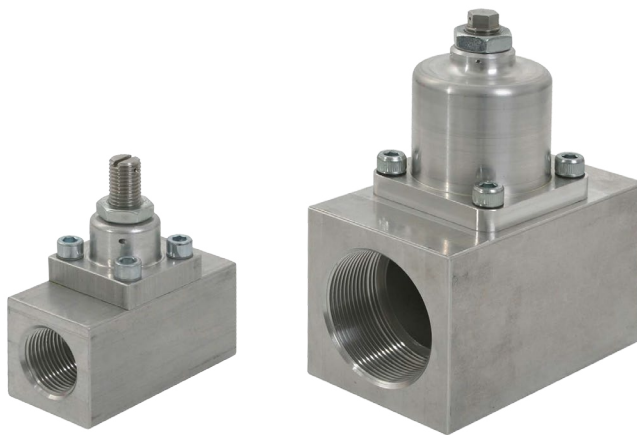


# LES-GT 20 / 25 / 40 / 50

## DATA SHEET

### Description

LES-GTs are mechanical gas valves for air-fuel-ratio control (AFR) of gas engines suitable for various gas qualities. They are available with several cross sections and applied together with



Venturi based gas mixers. Due to their design, these valves are totally maintenance-free and long lasting. Main applications are gas engines, working at one single operating point. Gas flow optimum is adjusted by positioning a specially shaped piston inside the LES-GT gas valves.

LES-GT gas valves are available with inner diameters of 20 mm up to 50 mm. Appropriate dimensioning of valve size to a specific application is highly depending on engine type, gas type and quality as well as the design of the corresponding Venturi gas mixer. For individual dimensioning contact Heinzmann.

### Features

Gastight up to 2 bar abs.

Suitable for different gas types and qualities

Cost effective and maintenance-free fuel system component without moving parts

Suitable for naturally aspirated and turbo charged engines

### List of types

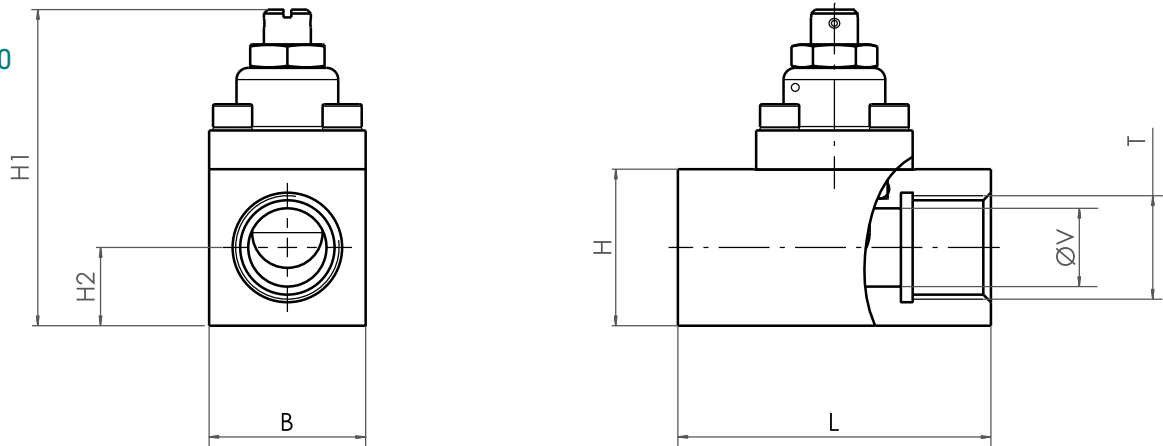
Type	Flow diameter ØV	Product number
LES-GT 20	20 mm	471-00-001-01
LES-GT 25	25 mm	471-00-002-01
LES-GT 40	40 mm	471-00-003-03
LES-GT 50	50 mm	471-00-004-00

### Applications

- Gas mixing system for naturally aspirated and supercharged gas engines

# Dimensions

LES-GT  
20 / 25 / 40 / 50



Type	ØV mm	L mm	H mm	B mm	H1 mm	H2 mm	T mm
LES-GT 20	20	80	40	40	77 ... 92	20	B.S.P thread Rp 3 / 4"
LES-GT 25	25	95	50	50	91 ... 111	25	B.S.P thread Rp 1"
LES-GT 40	40	120	60	60	136 ... 171	30	B.S.P thread Rp 1 1 / 2"

## Technical data

Operating temperature	-20 ... 100 °C
Boost pressure	max. 2 bar abs.
Fuel gas types	natural gas, propane, waste dump gas, biogas
Weight	LES-GT 20: approx. 0.4 kg
	LES-GT 25: approx. 0.7 kg
	LES-GT 40: approx. 1.4 kg
	LES-GT 50: approx. 2.7 kg

## Certificates

ATEX  II 2 G c II

