

StG 2010

DATA SHEET

Description

Diesel engines up to 200 kW as well as gas engines or gas and steam turbines are the preferential application for this type of actuators.

A multi-polar magnetised permanent magnet is mounted on the actuator shaft. Opposite of it a likewise multipolar armature is fixed. The design allows to generate powerful torque in both directions of working equally. Results of the direct acting gearless function are very fast response times. Optionally a return spring can be mounted on the output shaft to ensure setting to a zero position in case of voltage loss or similar.

A contactless feedback system mounted on the actuator shaft offers a precise electrical signal of shaft position to any external control device. If the actuator is blocked mechanically a current limitation is activated after approx. 20 seconds to prevent the actuator from overheating or damage. The use of special materials and long-duration lubricants assure maintenance-free operation and long service life. Altogether, this type of actuator provides high regulation power working in both directions at only low current consumption. It is indifferent to slow voltage changes of the supply and allows any fitting position. Several different electrical connecting variants are available.



Features

Strong regulation torque working in both directions equally

Quick response time

Low current consumption on change of load

Extremely low retaining current

Indifference to slow voltage changes of the supply

Contactless feedback

Current limitation in case of blocking to prevent actuator overheating

Any mounting position possible

Maintenance-free

Return spring optional

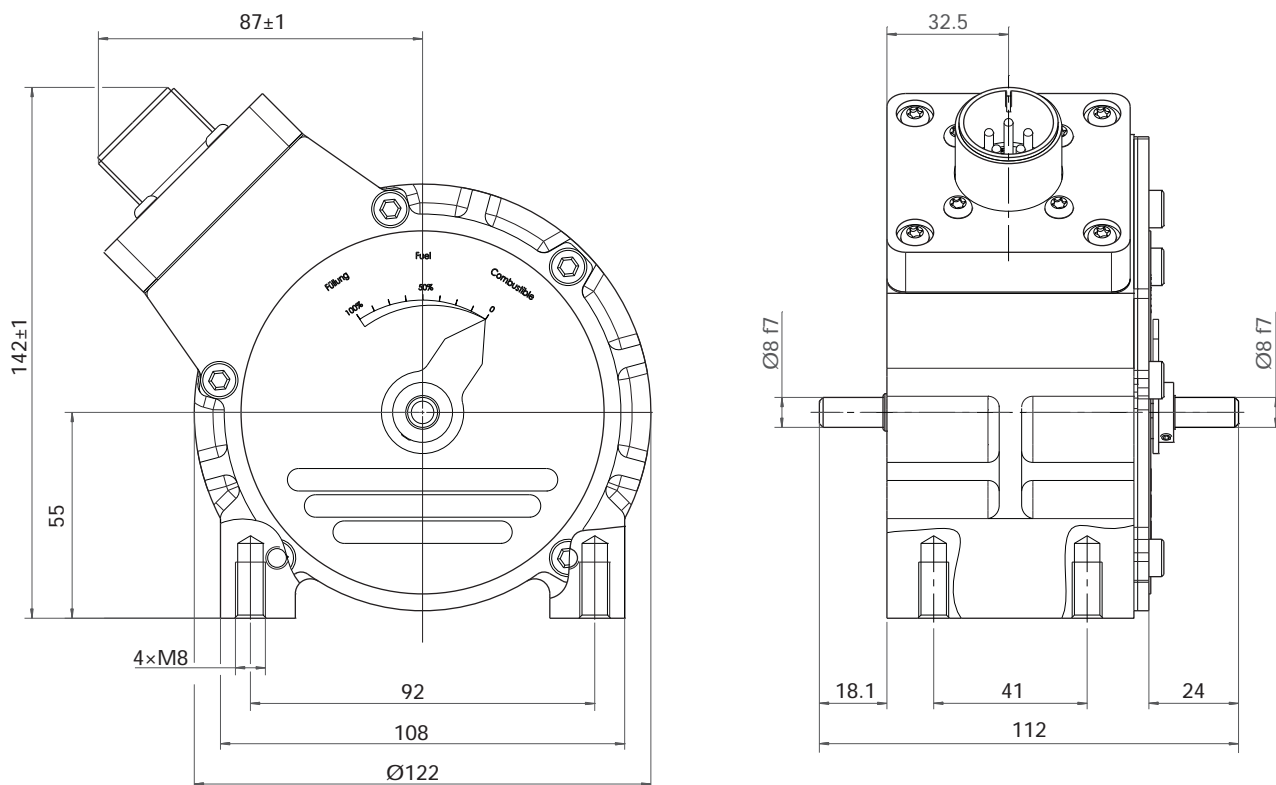
Application range

- ➔ Medium-sized and large diesel engines
- ➔ Gas engines
- ➔ Gas and steam turbines

Certificates

On request

Dimensions



Technical data

	StG 2010	
Rotation angle	36°	68°
Maximum torque with return spring	max. 2 Nm	max. 1.4 Nm
Steady state torque with return spring	max. 1 Nm	max. 0.7 Nm
No load response time	< 45 ms	< 60 ms
Current consumption	max. 6 A	
Steady state current	approx. 3 A	
Position feedback (0 ... 100 %)	approx. 1.6 ... 2.8 VDC	
Ambient temperature	-25 ... +90 °C	
Permissible ambient humidity	< 95 % at 55 °C	
Vibration	± 1 mm at 1 ... 20 Hz, max. 0.24 m/s at 21 ... 63 Hz, max. 5 g at 64 ... 2000 Hz	
Shock	30 g, 11 ms - half sine	
Protection grade	Housing IP65 Plug IP65	
Weight	approx. 2.2 kg	

Subject to alterations. ©HEINZMANN GmbH & Co. KG, 2015