

# ATEX Area Wash System

## DATA SHEET

### Description

The gas turbine compressor wash system is designed to clean gas turbine compressor blades in hazardous areas by using a high-pressure hot water jet, with a maximum pressure of 150 bar.

The unit is free standing and has a three phase 50 Hz or 60 Hz, 380 through 690 VAC, 4 kW motor driving a high-pressure water pump.

There is also a water tank within the unit with an integrated 6 kW temperature controlled heating element. All wash system components are approved for ATEX area application.



### Features

Static or wheeled portable versions

Hazardous area application

Hot, high-pressure system

Stainless or mild steel cabinet versions

All wetted parts in passivated stainless steel

Self-contained

### Applications

- Gas turbines

### Technical data

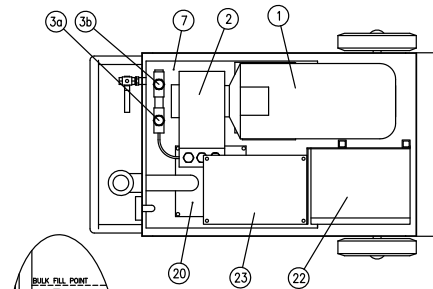
#### Electrical information

Max. power consumption	6 kW
Voltage	380 through 690 VAC, 3 phase
Frequency	50/60 Hz
Motor power	4 kW/5.5 Hp
Heating element	6 kW
Water requirements	60 °C
Max. inlet temperature	
Min. inlet pressure	2 bar
Performance data maximum working pressure	150 bar
Maximum water flow rate	15 l/min
Maximum output temperature	70 °C
Sound pressure	85 dB (A)
All electric components	IP65 or above, ATEX approved

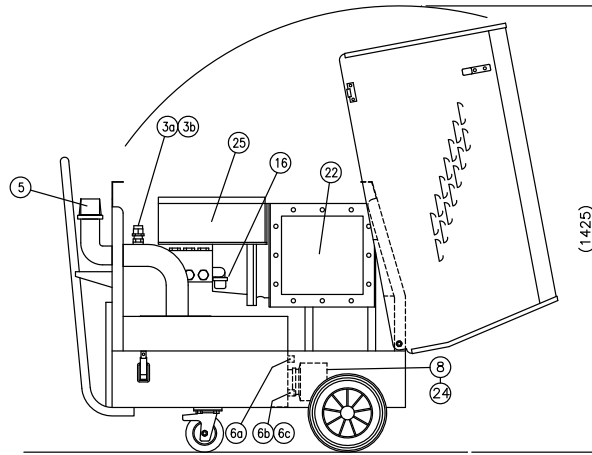
# Dimensions

Typical Wash System General Arrangement Drawing (please see note\*)

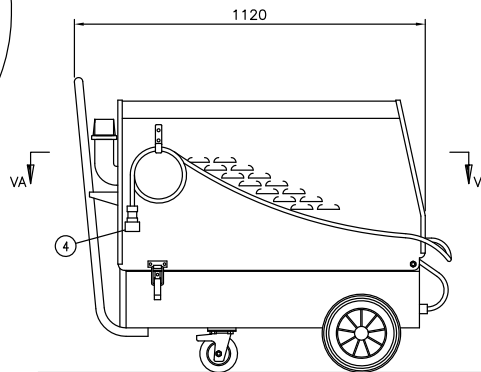
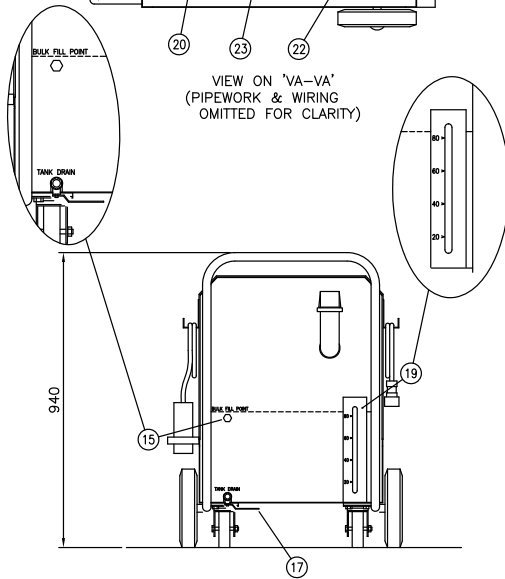
WEIGHT, DRY = 130 Kg  
WEIGHT, WET = 200 Kg



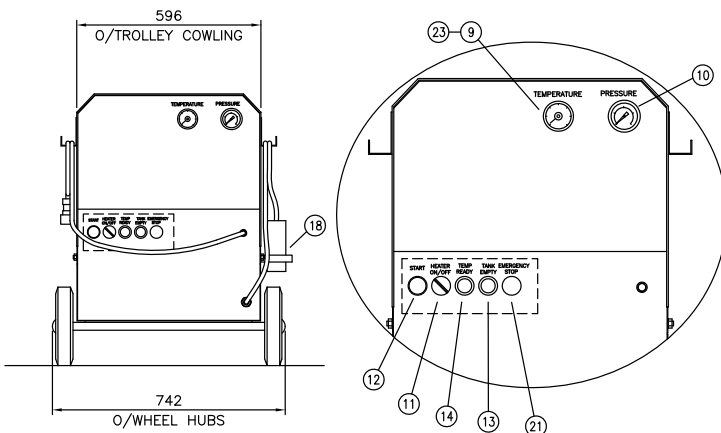
VIEW ON 'VA-VA'  
(PIPEWORK & WIRING  
OMITTED FOR CLARITY)



(PIPEWORK & WIRING  
OMITTED FOR CLARITY)



SIDE ELEVATION



## KEY COMPONENT LEGEND

KEY No.	DESCRIPTION	SIZE	TYPE	TAG No.
1.	MOTOR	ASA 112M-2	3Ø MOTOR B4/B3	XM15
2.	PUMP	23D.020	MULTI-PISTON	XP6
3a.	PRESSURE CONTROL VALVE	½" NPT	40A002	PCV34
3b.	SAFETY VALVE	½" NPT	40A002	PSV57
4.	WASH FLUID OUTLET (HANSEN Q.R.)	½" HK SERIES	SOCKET & DUSTCAP	FNc
5.	TANK FILLER WITH FILTER	76mm	FILTER-AB.68918	XF85
6a.	TANK 'LOW LEVEL SWITCH'		FLOAT SWITCH-RSF40	LS78A
6b.	TANK 'LOW LEVEL SWITCH'		FLOAT SWITCH-RSF40	LS78B
6c.	TANK 'LOW LEVEL SWITCH'		FLOAT SWITCH-RSF40	LS78D
7.	TANK (s.s.)	525x545x283		-
8.	HEATING ELEMENT	FP4-3-6-18-FS3-S0	RESISTIVE ELEMENT	IH7A
9.	TEMPERATURE GAUGE	63mm		TI23
10.	PRESSURE GAUGE	9C.001;G¼";63mm	LIQUID FILLED	PI56
11.	HEATER SWITCH (ON/OFF)		2 POS'N SWITCH	HS77
12.	PUMP SWITCH START		MOMENTARY PUSHBUTTON	HS98
13.	TANK EMPTY INDICATOR		RED INDICATOR	XL56
14.	TEMPERATURE READY INDICATOR		GREEN INDICATOR	XL55
15.	BULK FILL POINT	¾" BSPP FEMALE		JVc
16.	FILTER ELEMENT	7B.002 - 50 MICRON	INLINE FILTER	XF109
17.	DRAIN VALVE	¾" NPT FEMALE		HV117 (DKc)
18.	ELECTRIC CONNECTION PLUG	5 PIN, 16A	3Ø+N+E	-
19.	TANK LEVEL GAUGE	¼"	CLEAR TUBE	LG7
20.	TANK INSPECTION COVER			-
21.	EMERGENCY STOP BUTTON		MUSHROOM HD P'BUTTON	HS97
22.	CONTROLS ENCLOSURE		Exd CERTIFIED	-
23.	TEMP. SWITCH (CONTROL)			TS78
24.	TEMP. SWITCH (CUT-OUT)	(PART OF HEATER)	BI-METALLIC STRIP	TS80
25.	TERMINAL ENCLOSURE		Exe CERTIFIED	-

\* Note. Please ask manufacturer for the exact drawing against your order. Wash systems may vary in control and layout arrangements depending on the application.

**Heinzmann Regulateurs Europa Ltd.** | 6 Crown Gate, Wyncolls Road  
Severalls Industrial Park | Colchester Co4 9HZ | United Kingdom  
Phone +44 1206 799 556 | Fax +44 1206 792 685 | sales@heinzmann-re.com  
[www.heinzmann-re.com](http://www.heinzmann-re.com)

