

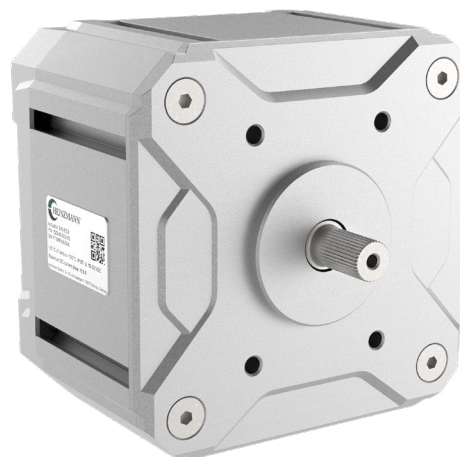
StG EC 8 / 16 / 32 / 100

DATA SHEET

Description

This series of actuators represents HEINZMANN's new generation of redesigned positioners.

They provide high performance combined with rapid response, irrespective of direction of rotation or shaft position. Thanks to the robust design, there are virtually no limits to the areas of application, such as industrial or marine purposes.



The new modular concept enables a high degree of flexibility when attaching add-on parts directly to the actuator such as throttle valves, linkages or similar. As these only require a modified end shield design the basic body of the device remains unchanged.

StG EC actuators come with fully maintenance-free brushless electric drive. Their magnetic system directly works on the shaft and provides considerable torque. StG EC 100 is additionally equipped with a planetary gearbox to achieve even higher torques up to 100 Nm. Due to the low moment of inertia of the drive and the sophisticated electronic control very low response times can be achieved.

T-grooves are provided in the housing profile to enable optimum installation with locknuts. There are also threaded holes in the end shield, which also allow reliable mounting. Any mounting position or orientation of the device is permissible. The robust and enduring design allows operation under roughest ambient conditions.

Certificates

on request

Features

High torque up to 100 Nm

Modular design

Robust design for heavy duty use in sturdy environment

Applicable over a wide temperature range

For hot and cold side application

Integrated electronics

Any mounting position or orientation possible

Application range

- Any kind of industrial, marine or mobile engine application
- Medium-sized and large diesel and gas engines
- Gas and steam turbines
- Industrial valves with increased actuating force or ambient temperature requirements

Technical data

	StG EC 8	StG EC 16	StG EC 32	StG EC 100
Rotation angle	90° nominal, up to 320° optional			90°
Torque, peak	8 Nm	16 Nm	32 Nm	100 Nm
Torque, nominal	4 Nm	8 Nm	16 Nm	50 Nm
Operating voltage range	nom. 24 VDC, 18 ... 32 VDC, derating below 22 VDC			
Current consumption, peak	5.5 A	7.5 A	16 A	
Current consumption, nominal	1.5 A	2 A	4 A	
Response time 10 ... 90 %	55 ms		65 ms	250 ms
Ambient temperature range	-40 ... 105 °C		-40 ... 95 °C	
Permissible ambient humidity	up to 98 %			
Vibration level	±1 mm at 1 ... 20 Hz, 0.24 m/s at 21 ... 63 Hz, 9g at 64 ... 2000 Hz			
Shock level	30g, 11 ms, half wave			
Degree of protection	IP6K9K actuator / IP65 plug connector			
Communication interface	1× CAN Bus isolated (HZM CAN, SAE J1939, CANopen or other protocols) 1× RS232, diagnose interface			
Inputs	1× analogue setpoint, 4 ... 20 mA, 0 ... 5 V, isolated 1× PWM, isolated 3× digital			
Outputs	1× analogue output 4 ... 20 mA, 0 ... 5 V 2× digital output, high-side switch			
Wiring	ITT CANNON plug, 24-pin connector / terminal strip on request			
Weight	approx. 5.8 kg	approx. 7.5 kg	approx. 11.9 kg	approx. 15.6 kg

Dimensions

