

PANOPTES 02 HMI

DATA SHEET



Description

PANOPTES 02 as part of the HEINZMANN generator control system THESEUS is a compact Human Machine Interface (HMI) for visualising, operating and controlling. With its features of 10.4 or 5.7 inch full VGA TFT display, touch screen and a powerful PowerPC processor it is particularly suited to THESEUS applications but can equally be used with other systems.

A wide range of interfaces allows data exchange with PLC or SCADA via ETHERNET, CAN bus, RS485, or an optional PROFIBUS interface as well as a web visualisation. Optional digital and analogue I/O can be used to extend the control panel to do conventional PLC functions. For special purposes like Alarm Messaging and Data Logging an SD Card or USB memory stick can be used.

The data visualisation is normally performed by a number of standard screens. However, custom specific extensions can be provided to meet the needs of specific projects.

Application range

- ➔ Price-sensitive applications
- ➔ Local equipment cabinet operation
- ➔ Control room operation in small up to medium plant size
- ➔ Reducing of mechanical operation and instrumentation elements
- ➔ Summarisation of data to be displayed from different sources

Features

Dialog panel and PLC controller in one device

Compact and high functional

Integrated display and control

Wide range of interfaces

Multifunctional I/O extension cards

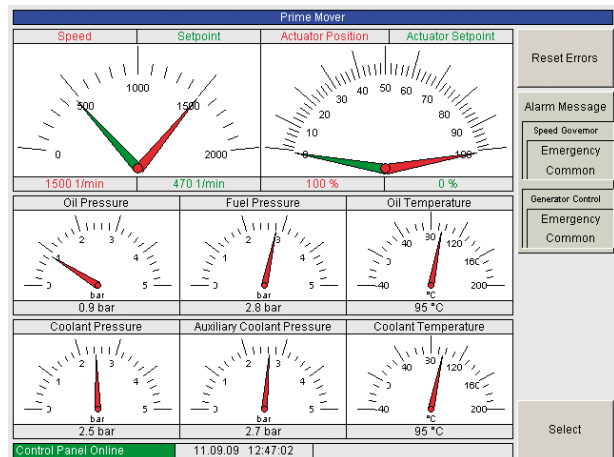
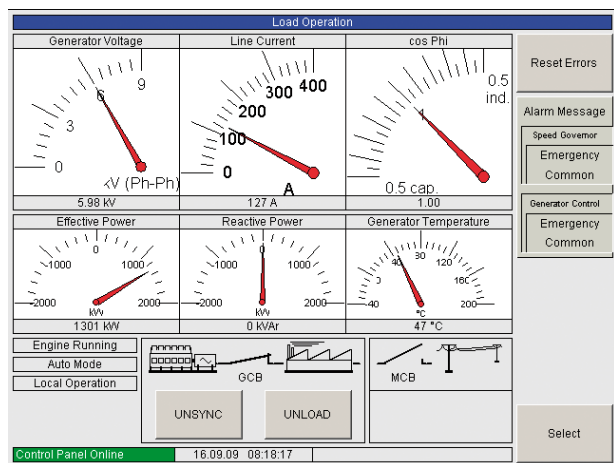
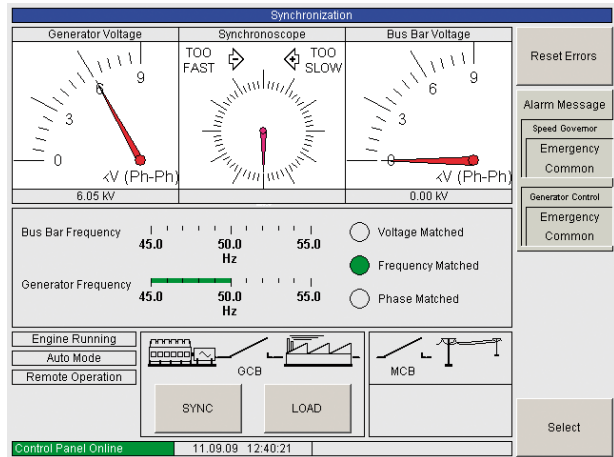
Sufficient memory even for complex applications

Memory extension by SD Card Slot and USB

Remote-controlling via web server, FTP and Email functionality

Language selection

Processor	PowerPC CPU, 400 MHz
Memory	RAM: 128 MB Flash: 32 MB
Memory extension	SD Card Slot, optional up to 4 GB
Display size diagonal	10.4 inch (rectangular 8.3 x 6.2 inch) 5.7 inch (rectangular 4.5 x 3.4 inch)
Display type	VGA
Resolution	640 x 480
Display colours	65536
Operation	Touch sensitive area, resistive matrix touch
Operating system	Linux with real-time extension
Interface	1 ETHERNET 10/100 Mbit/s 1 CAN, max. 1 Mbit/s 1 RS485 1 RS232 1 USB 1 PROFIBUS optional
Digital I/O	Miscellaneous, on request
Protocol	MODBUS, CANopen, PROFIBUS
Time	RTC
Supply voltage	24 V
Temperature range	0 ... 50 °C
Protection class	IP 65 front / IP 20 rear
Fitting dimensions	14.17 x 10.24 x about 4.8 inch (10.4 inch display type) 7.5 x 6.8 x about 3.5 inch (5.7 inch display type)



Examples for standard screens

Subject to alterations. ©HEINZMANN GmbH & Co. KG, 2009